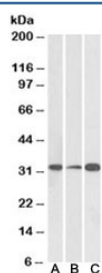


EB3 Antibody [MAPRE3] (R34518)

Catalog No.	Formulation	Size
R34518-100UG	0.5 mg/ml in 1X TBS, pH7.3, with 0.5% BSA (US sourced) and 0.02% sodium azide	100 ug

[Bulk quote request](#)

Availability	1-3 business days
Species Reactivity	Human, Mouse
Predicted Reactivity	Cow, Dog
Format	Antigen affinity purified
Clonality	Polyclonal (goat origin)
Isotype	Goat Ig
Purity	Antigen affinity
Gene ID	22924
Applications	Western Blot : 0.05-0.2ug/ml ELISA (peptide) LOD : 1:16000
Limitations	This EB3 antibody is available for research use only.



Western blot testing of human [A], mouse [B] and rat [C] brain lysate with EB3 antibody at 0.1ug/ml. Predicted molecular weight: ~32kDa.

Description

Additional name(s) for this target protein: End binding protein 3, Microtubule-associated protein, RP/EB family, member 3; MAPRE3

Application Notes

Optimal dilution of the EB3 antibody should be determined by the researcher.

Immunogen

Amino acids KLIGTAVPQRTSPT were used as the immunogen for this EB3 antibody.

Storage

Aliquot and store the EB3 antibody at -20oC.